



Perfect solution to all problems

Tips, Tricks, General Knowledge, Current Affairs, Latest Sample,
Previous Year, Practice Papers with solutions.

CBSE 12th Biology 2008 Unsolved Paper Delhi Board

By Solution: <http://www.4ono.com/cbse-12th-biology-previous-year-solved-papers/>

Note

This pdf file is downloaded from www.4ono.com. Editing the content or publicizing this on any blog or website without the written permission of [Rewire Media](#) is punishable, the suffering will be decided under

DMC

CBSE 12th Biology 2008 Unsolved Paper Delhi Board

TIME - 3HR. | QUESTIONS - 30

THE MARKS ARE MENTIONED ON EACH QUESTION

SECTION - A

Q.1 What causes speciation according to Hugo-de-Vries? *1 mark*

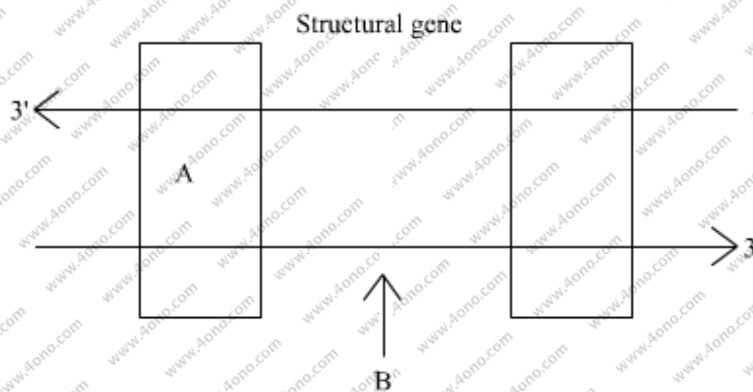
Q.2. When and why do some animals like frogs hibernate? *1 mark*

Q.3. List any two economically important products for human obtained from *Apis Indica*. *1 mark*

Q.4. Name the Indian variety of rice patented by an American Company. *1 mark*

Q. 5. What role of macrophages play in providing immunity to humans? *1 mark*

Q. 6. Name the parts 'A' and 'B' of the transcription given below: *1 mark*



Q. 7. What is the major difference you observe in the offspring's produced by asexual reproduction and in the progeny produced by sexual reproduction? *1 mark*

Q.8. Name the world's most problematic aquatic weed. What is the nature of the water body in which the weeds grow abundantly? *1 mark*

SECTION - B

Q. 9. The flower of brinjal is referred to as chasmogamous while that of beans is cleistogamous. How are they different from each other? *2 marks*

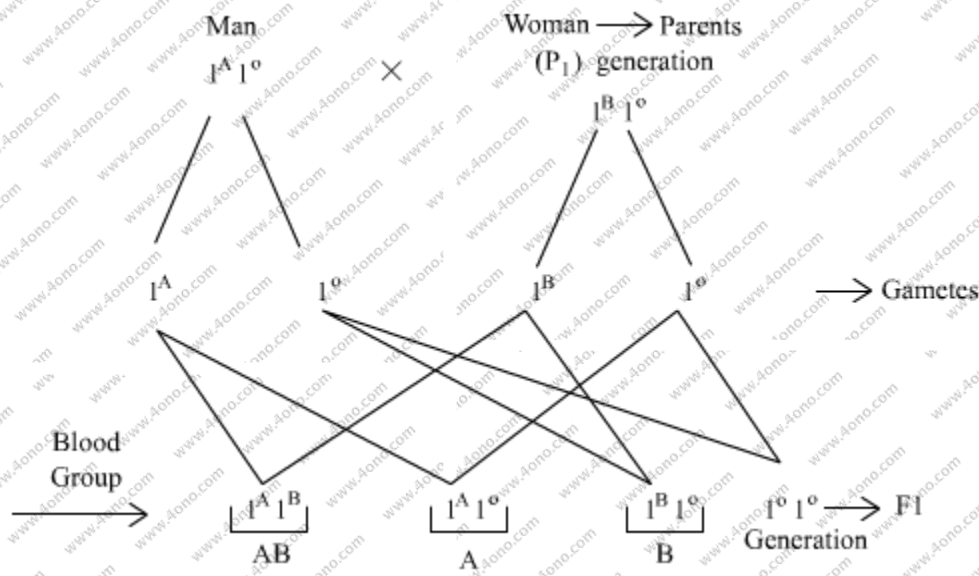
Q. 10. Name the interaction in each of the following: 2 marks

- (a) Cuckoo lays her eggs in the crow's nest.
- (b) Orchid grows on a mango tree.
- (c) Ticks live on the skin of dogs.
- (d) Sea anemone is often found on the shell of hermit crab?

Q. 11. The male fruit fly and female fowl are heterogametic while the female fruit fly and the male fowl are homogametic. Why are they called so? 2 marks

OR

A man with blood group A married a woman with B group. They have a son with AB blood group and a daughter with blood group O. Work out the cross and show the possibility of such inheritance.

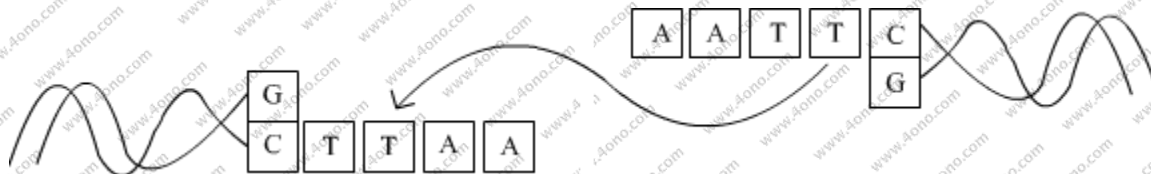


Q. 12. Why is using tobacco in any form injurious to the health explain. 2 marks

Q. 13. Differentiate between a productivity and decomposer giving an example. 2marks

Q. 14. A mother of one year old daughter wanted to space her second child. Her doctor suggested CuT. Explain its contraceptive actions. 2 marks

Q.15.



Study the linking of DNA fragments shown above.

- (i) Name 'a' DNA and 'b' DNA.
- (ii) Name the restriction enzyme that recognises this palindrome.
- (iii) Name the enzyme that can link these two DNA fragments. *2 marks*

Q. 16. What is divergent evolution? Explain taking an example of plants. *2 marks*

Q. 17. Name the blank spaces a, b, c and d in the table given below: *2 marks*

Type of Microbe	Name Product	Commercial
Fungus	a	Penicillin
Bacterium	Acetobacter aceti	B
C	Aspergillus niger	Citric acid
yeast	d	ethanol

Q.18. Thermal power plants are inevitable in an industrial and densely populated Country like ours. What harm do they do the environment? Also mention any precaution that could be taken to save our environment. *2 marks*

SECTION - C

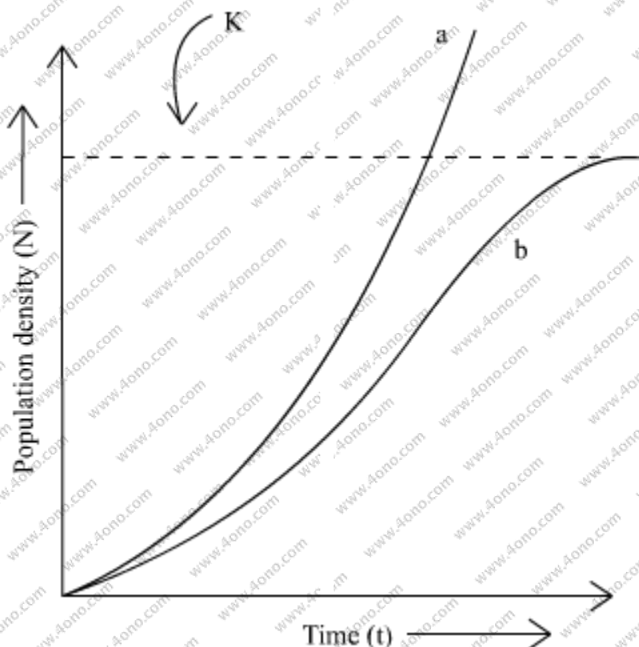
Q.19. Draw a labelled diagram of the microscopic structure of a human sperm. *3 mark*

Q.20. Expand MOET. Explain the procedure of this technology in cattle improvement. *3 marks*

Q. 21. One of the codons on mRNA is AUG. Draw the structure of tRNA adapter molecule for this codon. Explain the uniqueness of this tRNA? *3 marks*

Q.22. Study the population growth curves in the graph given below and answer the questions which follow: *3 marks*

- (i) Identify the growth curves 'a' and 'b'.



(ii) Which one of them is considered a more realistic one and why?

(iii) If $\frac{dN}{dt} = rN \left(\frac{K-N}{K} \right)$ is the equation of the logistic growth curve, what does K stand for?

(iv) What is symbolised by N?

Q. 23. How and why is bacterium *Thermus aquaticus* employed in recombinant DNA technology? Explain. 3 marks

OR

(a) What are (molecular scissors)? Give one example.

(b) Explain their role in recombinant DNA technology.

24. Given below is a part of the template strand of a structural gene: 3 marks

TAC CAT TAG GAT

(a) Write its transcribed mRNA strand with its polarity.

(b) Explain the mechanism involved in initiation of transcription of this strand.

Q. 25. (i) How and at what stage does Plasmodium enter into a human body?

(ii) With the help of a flow-chart only show the stages of asexual reproduction in the life-cycle of the parasite in the infected human.

(iii) Why does the victim show symptoms of high fever? 3 marks

Q. 26. It has been recorded that the temperature of the earth's atmosphere has increased by 0.6 °C. 3 marks

(a) What has caused this increase?

(b) Explain its consequences.

Q.27. Explain the pattern of inheritance of haemophilia in humans. Why is the possibility of a human female becoming hemophilic extremely rare? Explain. 3 marks

SECTION – D

Q. 28. Draw a labelled diagram of the sectional view of a mature pollen grain in angiosperms. Explain the functions of its different parts. 5 marks

OR

Give a schematic representation of oogenesis in humans. Mention the number of chromosomes at each stage. Correlate the life spans of the individual with the stages of the process.

Q.29. (a) Mention the role of vectors in recombinant DNA technology. Give any two examples.

(b) With the help of diagrammatic representation only, show the steps of recombinant DNA technology. 5 marks

OR

(a) What is plasmid?

(b) What is meant by ADA deficiency? How is gene therapy a solution to this problem? why is it not a permanent cure?

Q. 30. Explain Hershey-Chase experiment. What was proved through this experiment? 5 marks

OR

(a) A true breeding pea plant, homozygous for inflated green pods is crossed with another pea plant with constricted yellow pods (ffgg). What would be the phenotype and genotype of F_1 and F_2 , generations? Give the phenotype ratio of F_2 generation.

(b) State the generalization proposed by Mendel on the basis of the above mentioned cross.

